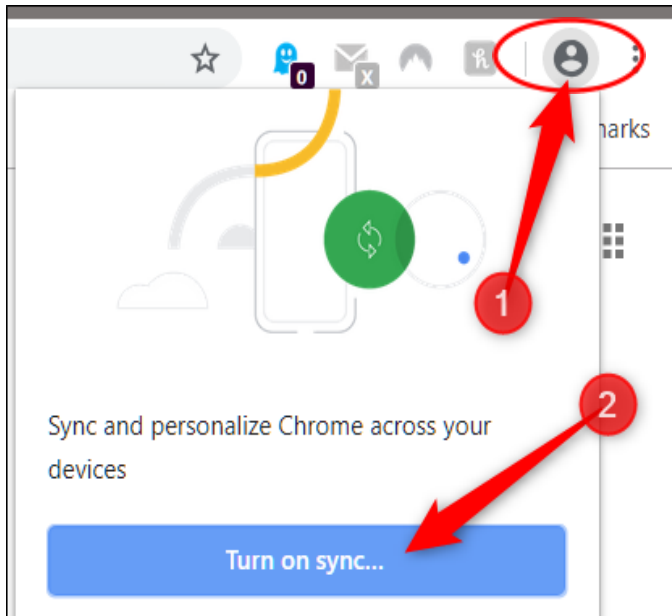
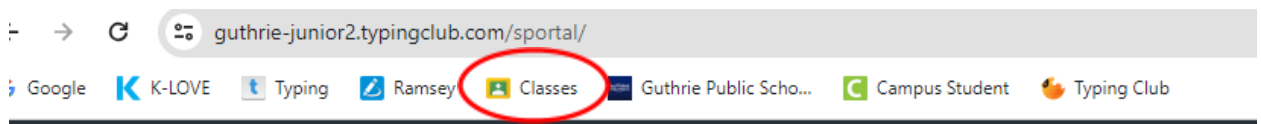


# SIGNING IN FOR SCHOOL WORK

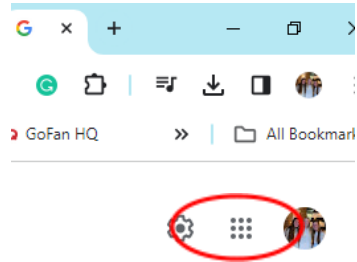
1. Open Google
2. Top right - select sign in and select "Turn on Sync"



3. Sign in with your school email
  - o [firstname.lastname@guthrieps.net](mailto:firstname.lastname@guthrieps.net)
  - o Password –there are two possibilities
    - Student's initials –first name initial is capital-and their student ID  
For example, Jane Doe would be Jd101293
    - OR Password is Gps and student ID for example (Gps101293)
4. Google Classroom – several options to sign in
  - o It is bookmarked on the Bookmark bar on the top of the screen



- OR Top right of the screen—select the 9 pin



- OR Clever.com - [Google Classroom](#)

#### 5. Clever

- Clever.com

#### 6. IXL

- Open Clever - Select Teacher Name - IXL
- OR Bookmark bar

#### 7. Infinite Campus –

- Open Guthrie Public Schools website –
- Menu bar under image - select Grades